

The Board of County Supervisors of Albemarle County, Virginia, in regular meeting on the 18th day of June, 2025, adopted the following resolution:

RESOLUTION

WHEREAS, the street(s) in **Briarwood Ph 4 and Ph 6**, as described on the attached Additions Form AM-4.3 dated **June 18th, 2025**, fully incorporated herein by reference, is shown on plats recorded in the Clerk's Office of the Circuit Court of Albemarle County, Virginia; and

WHEREAS, the Resident Engineer for the Virginia Department of Transportation has advised the Board that the street(s) meet the requirements established by the Subdivision Street Requirements of the Virginia Department of Transportation.

NOW, THEREFORE, BE IT RESOLVED, that the Albemarle Board of County Supervisors requests the Virginia Department of Transportation to add the street(s) in **Briarwood Ph 4 and Ph 6**, as described on the attached Additions Form AM-4.3 dated **June 18th, 2025**, to the secondary system of state highways, pursuant to §33.2-705, Code of Virginia, and the Department's Subdivision Street Requirements; and

BE IT FURTHER RESOLVED that the Board guarantees a clear and unrestricted right- of-way, as described, exclusive of any necessary easements for cuts, fills and drainage as described on the recorded plats; and

FURTHER RESOLVED that a certified copy of this resolution be forwarded to the Resident Engineer for the Virginia Department of Transportation.

* * * * *

Recorded vote:

Moved by:

Seconded by:

Yeas:

Nays:

Absent:

A Copy Teste:

Claudette K. Borgersen, Clerk
Board of County Supervisors



COMMONWEALTH OF VIRGINIA DEPARTMENT OF TRANSPORTATION
Form AM 4.3

In Albemarle County

by Resolution of the governing body adopted 6/18/2025

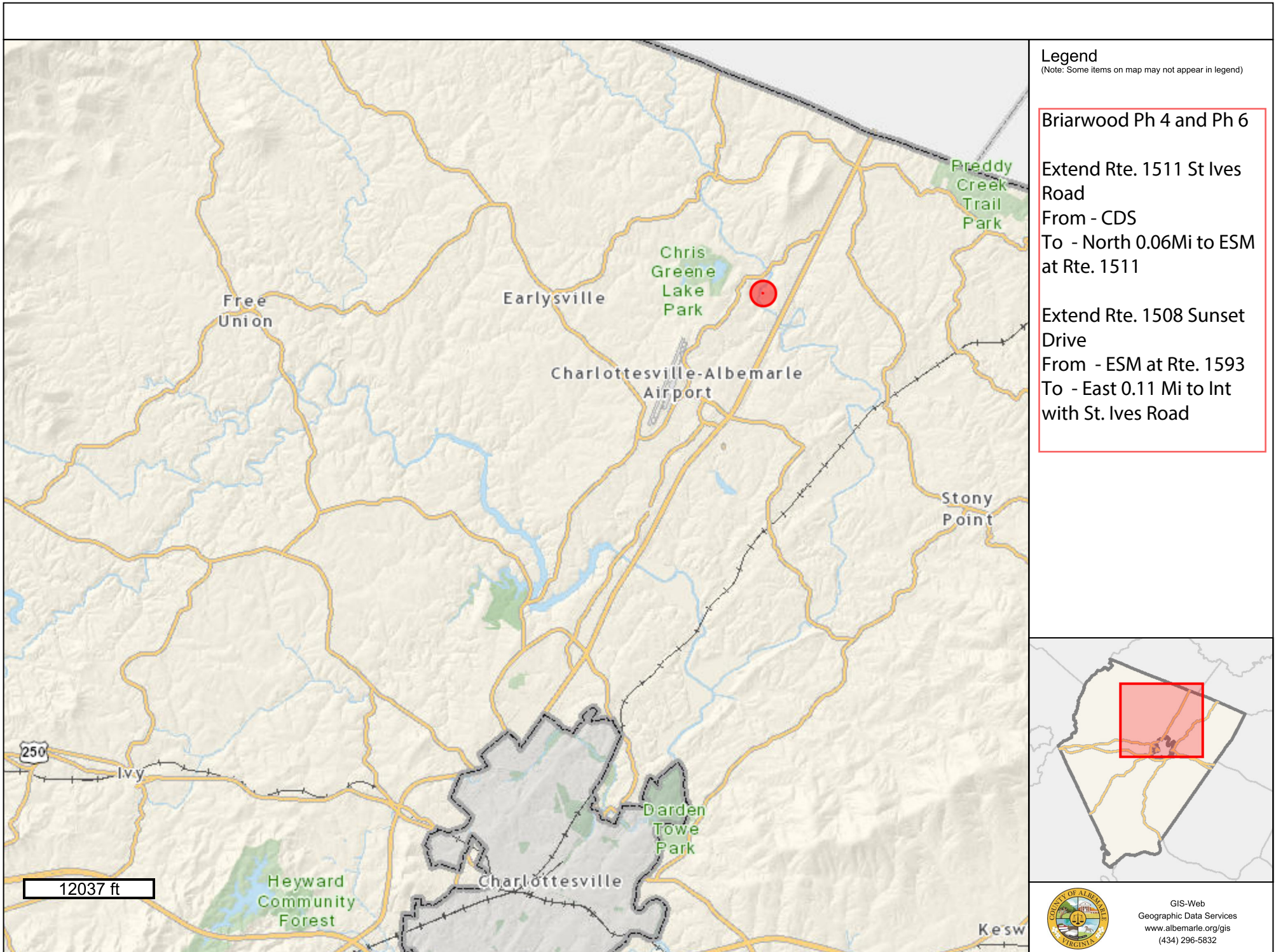
The following VDOT Form AM-4.3 is hereby attached and incorporated as part of the governing body's resolution for changes to the secondary system of state highways.

A Copy Testee Signed (County Official): _____

Report of Changes in the Secondary System of State Highways

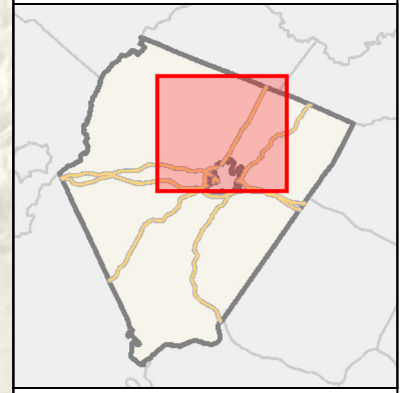
Project/Subdivision: **Briarwood Ph 4 and Ph 6**

CHANGE TYPE	RTE NUM & STREET NAME	CHANGE DESCRIPTION	FROM TERMINI	TO TERMINI	LENGTH	NUMBER OF LANES	RECORDATION REFERENCE	ROW WIDTH
Addition	Rt. 1511 - St Ives Road	New subdivision street §33.2-705	CDS	North 302 ft to ESM at Rte. 1511	0.06	2	4931/701	50
Addition	Rt. 1593 - Sunset Drive	New subdivision street §33.2-705	ESM at Rte. 1593	East 595ft to Int with St Ives Road	0.11	2	4931/701	51.00

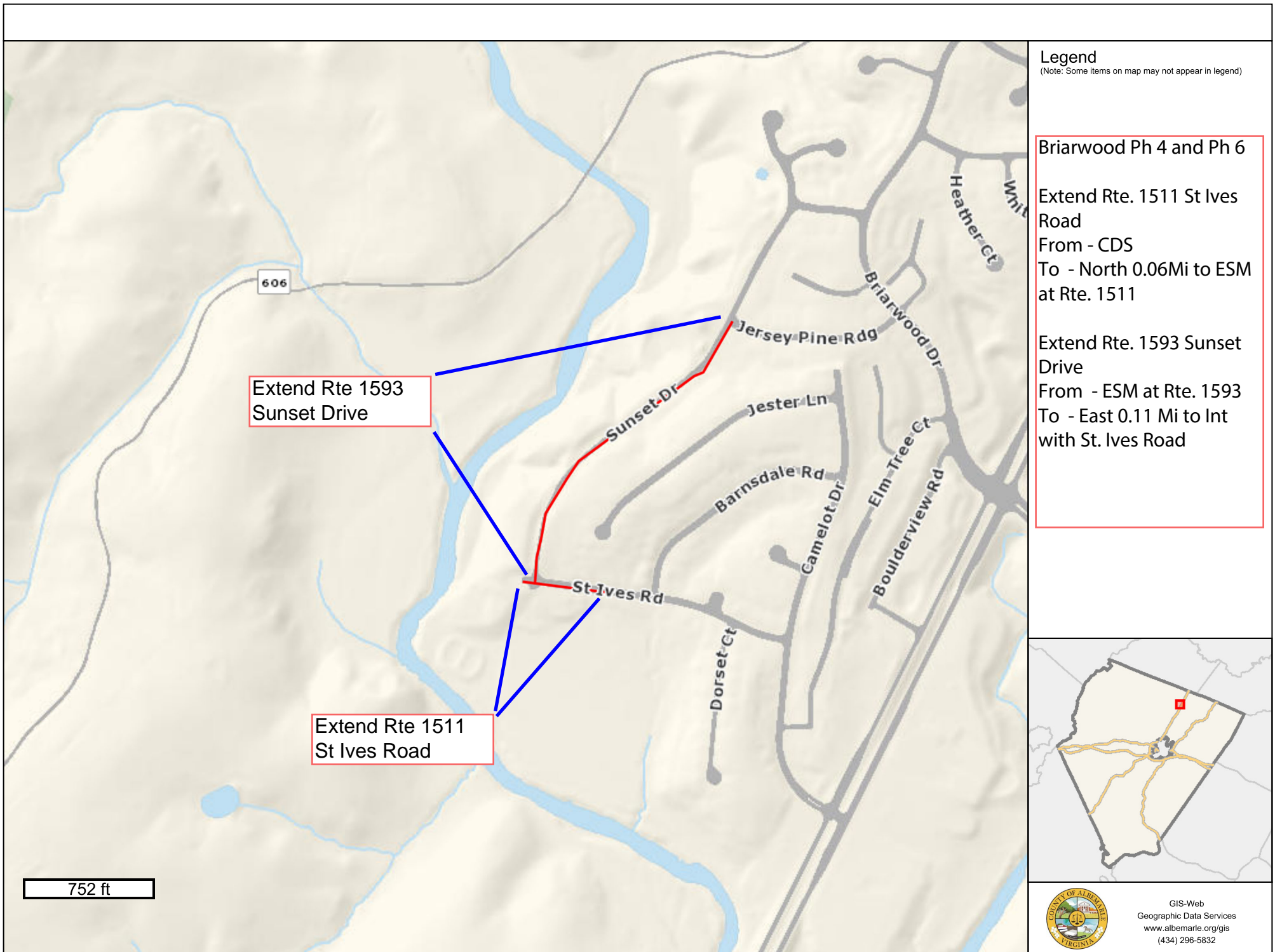


Legend
 (Note: Some items on map may not appear in legend)

- Briarwood Ph 4 and Ph 6**
- Extend Rte. 1511 St Ives Road
 From - CDS
 To - North 0.06Mi to ESM at Rte. 1511
- Extend Rte. 1508 Sunset Drive
 From - ESM at Rte. 1593
 To - East 0.11 Mi to Int with St. Ives Road



GIS-Web
 Geographic Data Services
www.albemarle.org/gis
 (434) 296-5832



Any determination of topography or contours, or any depiction of physical improvements, property lines or boundaries is for general information only and shall not be used for the design, modification, or construction of improvements to real property or for flood plain determination. Map elements may scale larger than GIS data measured in the map or as provided on the data download page due to the projection used. Map Projection: WGS84 Web Mercator (Auxiliary Sphere) (EPSG 3857)

